

# MONTHLY MEMBERSHIP PROGRESS REPORT

District 201N5

Results as of: 5/31/2026

GMT:

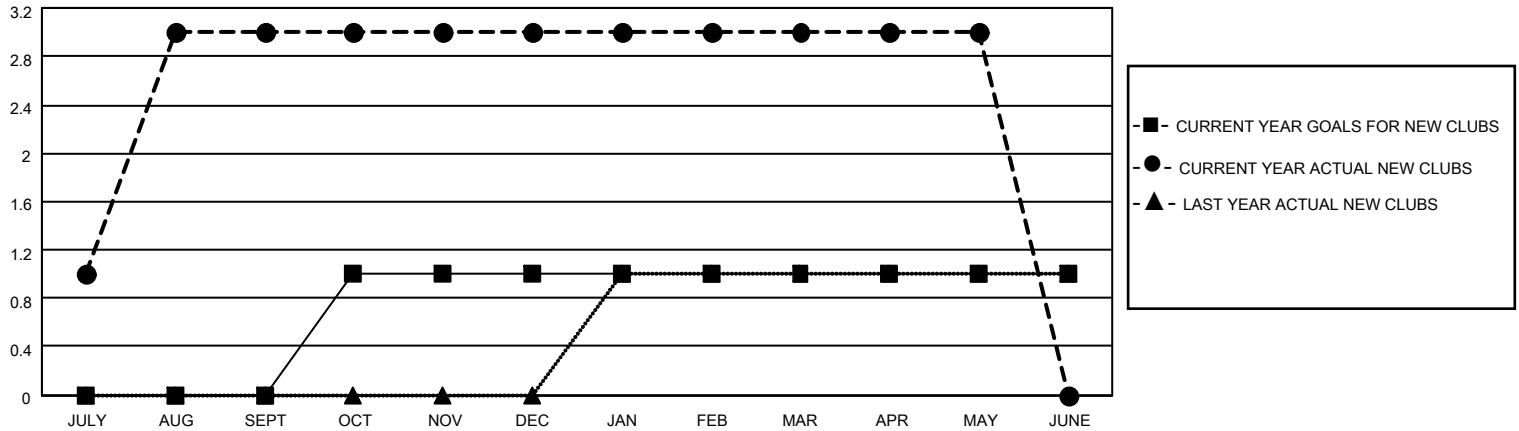
LOCATION AUSTRALIA

GMT CA

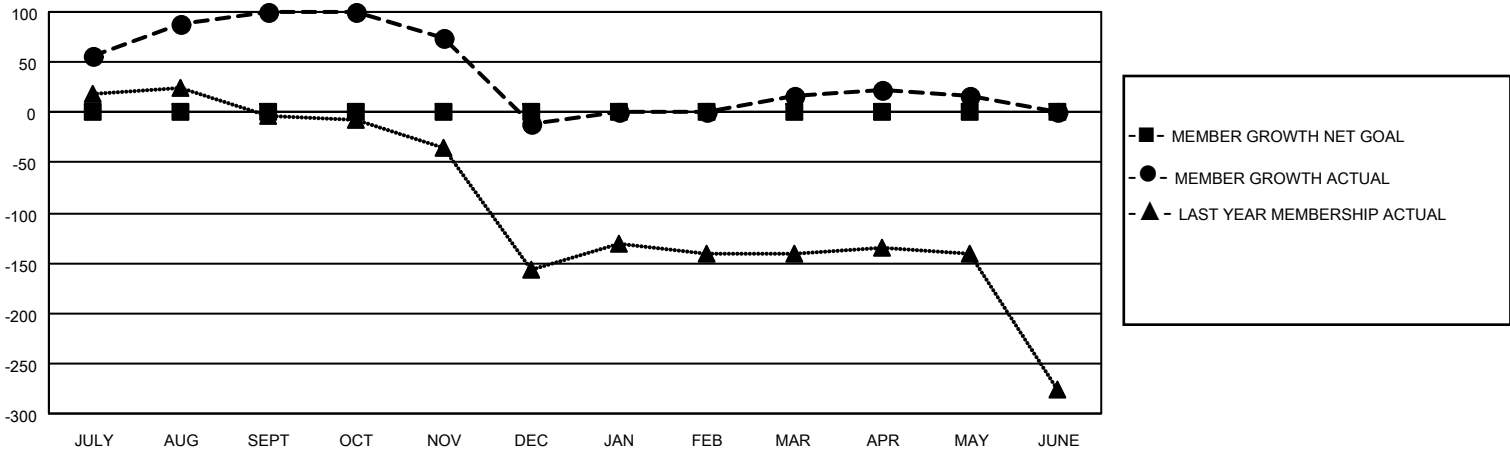
Clubs			
RESULTS FOR 2025-2026			
QUARTER	NEW CLUB GOAL	NEW CLUBS	DROPPED CLUBS
JULY/AUG/SEPT	0	3	0
OCT/NOV/DEC	1	0	1
JAN/FEB/MAR	0	0	0
APR/MAY/JUNE	0	0	0

Members			
RESULTS FOR 2025-2026			
QUARTER	MEMBER GROWTH NET GOAL	MEMBER GROWTH ACTUAL	DROPPED MEMBERS ACTUAL (including transfers)
JULY/AUG/SEPT	0	207	90
OCT/NOV/DEC	0	51	154
JAN/FEB/MAR	0	77	38
APR/MAY/JUNE	0	55	47

GOALS AND ACTUAL NEW CLUBS CUMULATIVE



GOALS AND ACTUAL MEMBERS CUMULATIVE



DROPPED CLUBS: 1	58 CLUBS OF 84 ADDED 1 OR MORE NEW MEMBERS	<u>GENDER DISTRIBUTION</u>	
		MALE	1,043 (58.07%)
<u>DROPPED MEMBERS</u>		FEMALE	749 (41.70%)
DECEASED	9	TOTAL FAMILY UNIT MEMBERS	
CLUB CANCELLED	13	235	
OTHER	307	FAMILY MEMBERS PAYING HALF DUES	
TOTAL	329	124	

[CLICK HERE FOR CUMULATIVE MEMBERSHIP DATA](#)